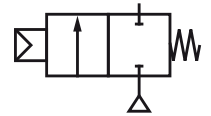


Function

The RM-NG 4 series is a 2/2-way solenoid valve for quick venting of diaphragm valves. The version is specifically designed for mounting in enclosure systems and can be inserted directly through the enclosure bore and screwed in from the front without prior disassembly.



Intended use

To ensure hazard-free use and safe function of the solenoid valve, the technical data in these operating instructions must be observed. Operation and use outside the technical data, disregard of these operating instructions or modifications to the solenoid valve are considered not as intended and will void warranty and liability.

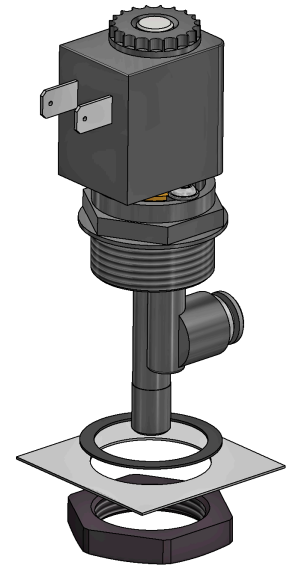


The electrical installation may only be carried out by an authorised electrician using suitable tools in accordance with DIN EN 60204-1. The valve may only be installed by skilled and instructed personnel.

Installation

Before mounting the solenoid valve the compressed air line and components must be checked for contamination and the pressure connection depressurised.

The direction of flow as well as the connection dimensions for the control tube can be taken from the dimensional drawing. When installing the valve into a housing wall, the sealing ring must be placed inside the housing and the valve screwed tightly from the outside with the M-25 nut.



Commissioning

Before pressurizing the solenoid valve, correct mounting and installation must be checked. The control tube or the pipe to the diaphragm valve must be checked for technical suitability and inserted into the push-fit as far as it will go. The valve can be equipped with a silencer to reduce noise during venting.

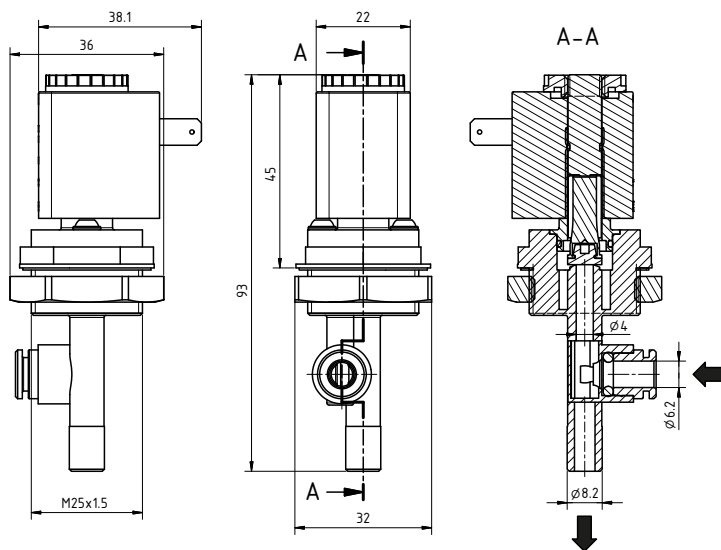
Maintenance

Pressure equipment must be serviced at regular intervals. We recommend performing a function and visual check of the RECO solenoid valves for wear, external damage and leaks at least once a year.

The solenoid valves are wearing parts, the service life of which largely depends on the operating conditions. Temperature, moisture, load change cycles and process gases affect the ageing behaviour and thus the service life. No spare parts are available for this valve series, so that the complete valve must be replaced in the event of malfunctions.

Technical specifications

Product	RM-NG 4-6P-24VDC	RM-NG 4-6P-230VAC
Product No.	10600001	10600007
Rated voltage	24 VDC	230 VAC
Electrical power	22 W	15 VA
Duty cycle	10% duty cycle	
Protection class without valve connector with valve connector in RECO NormLine housing	IP00 IP65 IP66	
Switching function	2/2-way solenoid valve, normally closed	
Mounting position	any	
Mounting bore	Ø 25.5 mm	
Connector type	Flat connector 6.3 mm x 0.8 mm	
Pressure connection	Push-Fit for 6/4 mm hose	
Flow coefficient kv	5.5 l/min	
Test pressure (PT)	8.5 bar	
Functional pressure (PS)	0 ... 6.5 bar	
Medium	Gases fluid group 2 / compressed air quality class 3 (DIN ISO 8573-1)	
Weight	40 g	
Materials	Box Armature Sleeve Seal	
	PA 6T/6I Stainless steel Brass NBR (acrylonitrile butadiene rubber)	



Disclaimer

The contents of this documentation have been verified for correctness and completeness. Nevertheless, errors cannot be excluded and we can therefore not guarantee the correctness of this information. Subject to alterations at any time.

RDN 10001300
Revision 02/2021