

Intended use

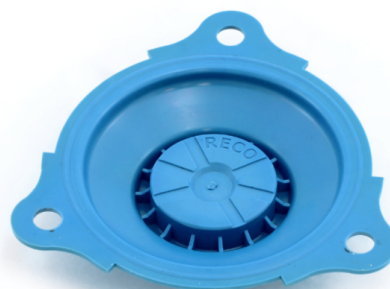
For a safe use and reliable function of the Power-Reflex diaphragms consider the technical specifications and in particular the safety instructions in the operating manual for diaphragm valves and flushing gas tank systems.

Any operation and use outside the technical specifications, non-compliance with the operating manual or modifications on the diaphragms are considered use other than intended use and will result in an exclusion of warranties and liability.

Improper use is present when the permissible pressure, the temperature limits or the environmental conditions of the operating area do not comply with the technical specifications for the diaphragm.

The RECO Power-Reflex diaphragm is solely designed for valves of the RECOVTEC range.

Only competent and instructed personnel is allowed to install the diaphragms. The party putting the product into operation or the operating company must follow the applicable regulations of the operating facility and installation country and prepare the respective suitable operating instructions. Such instructions must be written so that the attention of employees and third parties is drawn to all risks and hazards and the operating and maintenance personnel can understand all required instructions for a safe operation, maintenance or replacement of diaphragms on diaphragm valves and flushing gas tank systems.



HTP version

Product	MB-DN25-1x1,5	MB-DN25-1x1,5-HTP
Product No.	61700585	61700586
Temperature range	-20°C ... +100°C	-40°C ... +140°C
Colour	green	blue
Material	TPE-E	TPE-E additive
Pressure range	1,5 bar ... 8 bar	
Size	DN 25	
Medium	Neutral gases	

Disclaimer

The contents of this documentation have been verified for correctness and completeness. Nevertheless, errors can not be excluded so that we cannot guarantee the correctness of this information. Subject to alterations at any time.